

# IMPROVERS' LESSONS

## Welcome

Teachers: Christine Egelmeer  
Linda Thornton  
Lynne Geursen



# Lesson Six

## Finding Slams

### Blackwood

### Gerber



# When should you look for Slam?

1. When you have **32+HCP** and no fit
2. When you have **30+HCP** and a fit
3. With a **VERY** good fit and extra distribution (and close to 30HCP)



# Blackwood Convention

- Invented by Easley Blackwood
- Mr Blackwood was American
- He died aged 89 in 1992
- Inducted into the ACBL Hall of Fame in 1995 (a bit late!)



# Blackwood Convention

- Allows the one player to find the number of Aces and Kings held by their partner
- It is important to be sure which suit is trumps (or NoTrumps)



# Why use Blackwood?

- To prevent bidding a small slam missing two or more Aces
- To prevent bidding a grand slam missing an Ace

**To find MISSING Aces**



# 4NT – Asks for Aces

- 4NT asks partner ... “How many Aces do you have?”
- Partner must answer the question



**4NT is an ARTIFICIAL bid**



# Responses to 4NT

- 5♣ = 0 or 4 aces
- 5♦ = 1 ace
- 5♥ = 2 aces
- 5♠ = 3 aces



**4NT is an ARTIFICIAL bid**





# 5NT – Asks for Kings

- 5NT asks partner ... “How many Kings do you have?”
- Partner must answer the question
- You must have all the Aces



**5NT is an ARTIFICIAL bid**



# Responses to 5NT

- 6♣ = **0** or **4** kings
- 6♦ = **1** king
- 6♥ = **2** kings
- 6♠ = **3** kings



**5NT is an ARTIFICIAL bid**



# Should we bid SMALL or GRAND slam?



PARTNER	YOU
1 ♥	



# Should we bid SMALL or GRAND slam?



PARTNER	YOU
1 ♥	1 ♠



# Should we bid SMALL or GRAND slam?



PARTNER	YOU
1 ♥	1 ♠
3 ♦	



# Should we bid SMALL or GRAND slam?



PARTNER	YOU
1 ♥	1 ♠
3 ♦	4NT





# Should we bid SMALL or GRAND slam?



PARTNER	YOU
1 ♥	1 ♠
3 ♦	4NT
5 ♦	



# Should we bid SMALL or GRAND slam?



PARTNER	YOU
1 ♥	1 ♠
3 ♦	4NT
5 ♦	6 ♠





# Should we bid SMALL or GRAND slam?



PARTNER	YOU
1♠	



# Should we bid SMALL or GRAND slam?



PARTNER	YOU
1♠	2♥



# Should we bid SMALL or GRAND slam?



PARTNER	YOU
1 ♠	2 ♥
3 ♥	



# Should we bid SMALL or GRAND slam?



PARTNER	YOU
1♠	2♥
3♥	4NT



# Should we bid SMALL or GRAND slam?



PARTNER	YOU
1 ♠	2 ♥
3 ♥	4NT
5 ♦	



# Should we bid SMALL or GRAND slam?



PARTNER	YOU
1 ♠	2 ♥
3 ♥	4NT
5 ♦	5 ♥





# Should we bid SMALL or GRAND slam?



PARTNER	YOU
1♣	



# Should we bid SMALL or GRAND slam?



PARTNER	YOU
1♣	1♦





# Should we bid SMALL or GRAND slam?



PARTNER	YOU
1♣	1♦
1♥	



# Should we bid SMALL or GRAND slam?



PARTNER	YOU
1♣	1♦
1♥	4NT



# Should we bid SMALL or GRAND slam?



PARTNER	YOU
1♣	1♦
1♥	4NT
5♠	



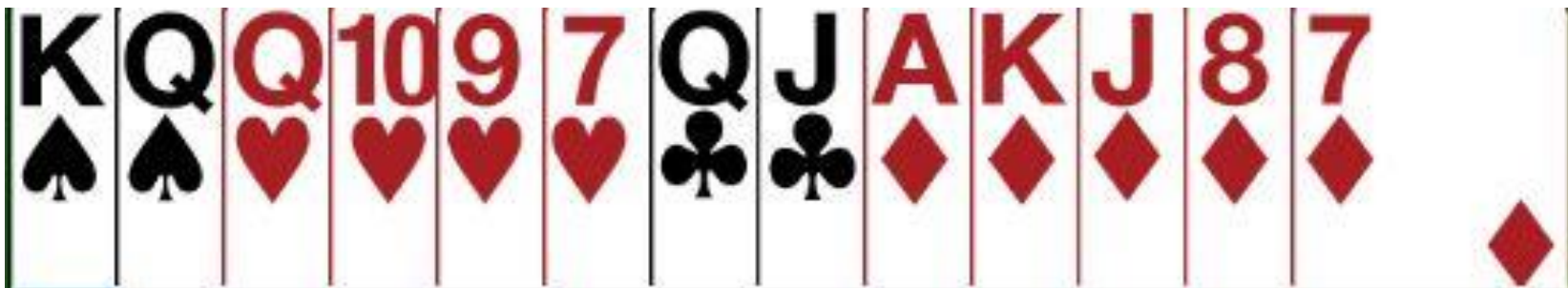
# Should we bid SMALL or GRAND slam?



PARTNER	YOU
1♣	1♦
1♥	4NT
5♠	5NT



# Should we bid SMALL or GRAND slam?



PARTNER	YOU
1♣	1♦
1♥	4NT
5♠	5NT
6♣	



# Should we bid SMALL or GRAND slam?



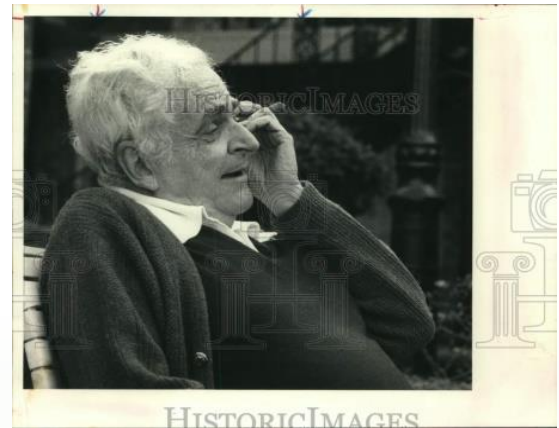
PARTNER	YOU
1♣	1♦
1♥	4NT
5♠	5NT
6♣	6♥





# Gerber Convention

- Gerber convention is another bidding system for investigating slam
- Invented by John Gerber
- John was born in present day Ukraine
- Settled in Houston Texas
- Began playing bridge during the Depression
- Died in 1981
- Was inducted into the Bridge Hall of Fame in 1998



# Gerber Convention

## (Review)

- You may have been taught Gerber -
  - Asks Partner, How many aces do you have? By saying 4C
  - Although often used by partner agreement, it was developed for use after a NT bid – 4C is the lowest bid you can make after 3NT
  - The answers?
    - 4D – 0 or 4
    - 4H = 1
    - 4S = 2
    - 4NT = 3
  - How many kings? Bid 5C
  - The answers?
    - 4D – 0 or 4
    - 4H = 1
    - 4S = 2
    - 4NT = 3





# IMPROVERS' LESSONS

Please contact me if you have any questions

**NZB**♣**ridge**

